

ZIPwire™

Hydrophilic Guidewire

**Boston
Scientific**

**Familiar Feel
Advanced Control**



Improved steerability*

The ZIPwire™ Hydrophilic Guidewire has focused design improvements to enhance steerability over the leading guide wire technology for better control. Now you have a choice when selecting your guide wire, without compromising performance*.

Advanced Control

Improved Steerability*

Enhanced tip flexibility designed to promote excellent maneuverability through tortuous anatomy.

Robust nitinol core augments torque transmission and rail support for excellent pushability.

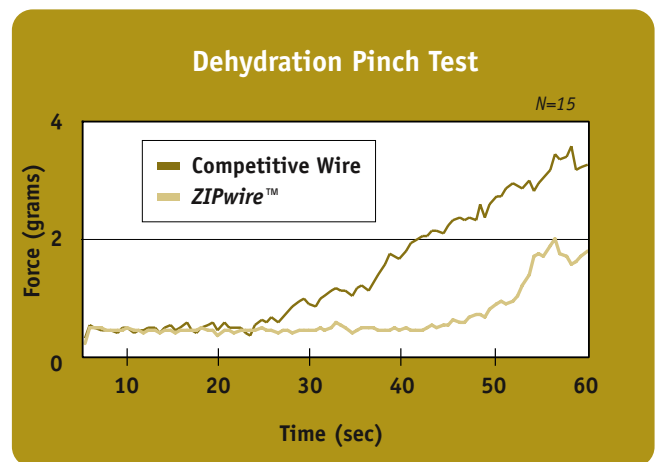
Refined tip transition aims to facilitate smooth catheter placement.

Excellent Trackability

Long-lasting hydrophilic coating supports quick device exchanges.

Efficient Proximal Handling

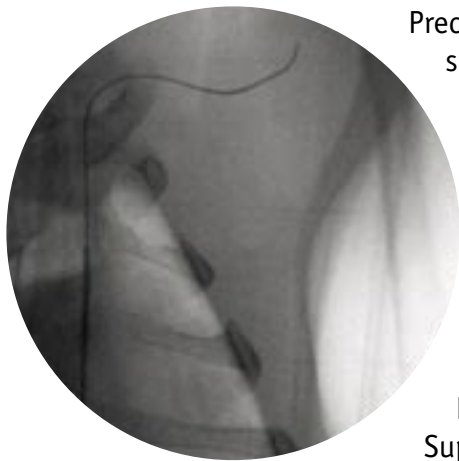
Slow-drying hydrophilic polymer improves handling outside the body.



Premium Performance

Crossability

Dynamic nitinol core promotes pushability for easy advancement.



Precise torque response designed to enable secure control when sub-selecting distal and angulated branch vessels.

Durable hydrophilic coating aims to facilitate crossing of tight lesions.

Radiopacity

Highly radiopaque jacket provides excellent visibility for accurate positioning.

Kink Resistance

Super-elastic nitinol core promotes excellent kink resistance.

Image source: Data on file at Boston Scientific.

Comprehensive Selection

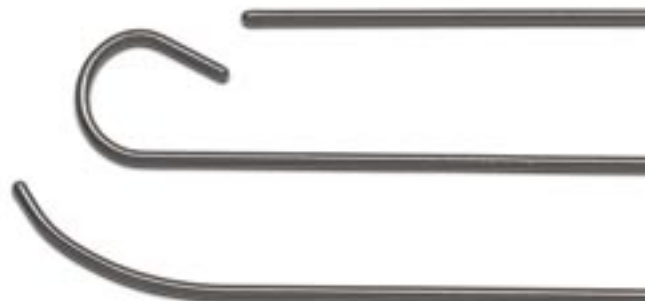
Wire Options

Stiff and standard versions accommodate a wide range of clinical situations.

Four lengths (80cm, 150cm, 180cm and 260cm) and three diameters (0.025", 0.035" and 0.038") meet most clinical challenges.

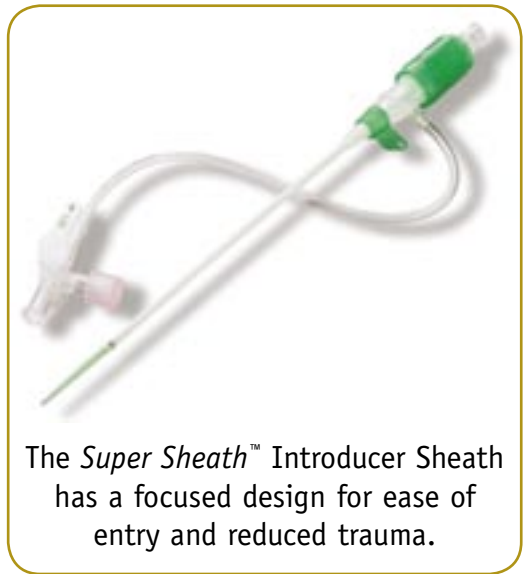
Tip Options

Choose from several tip shapes: angled, J-tip, straight, long-taper angled and long-taper straight.



Ordering Information

UPN	Order Number	Diameter (in)	Length (cm)	Core Taper (cm)	Tip Shape
Standard ZIPwire™ Hydrophilic Guidewire					
M00146151B1	46-151B	0.035	150	3	Angled
M00146155B1	46-155B	0.035	150	3	Straight
M00146152B1	46-152B	0.035	180	3	Angled
M00146156B1	46-156B	0.035	180	3	Straight
M00146154B1	46-154B	0.035	260	3	Angled
M00146159B1	46-159B	0.035	260	3	Straight
M00146161B1	46-161B	0.038	150	3	Angled
M00146165B1	46-165B	0.038	150	3	Straight
M00146162B1	46-162B	0.038	180	3	Angled
M00146166B1	46-166B	0.038	180	3	Straight
M00146164B1	46-164B	0.038	260	3	Angled
M00146169B1	46-169B	0.038	260	3	Straight
Stiff ZIPwire™ Hydrophilic Guidewire					
M00146300B1	46-300B	0.035	80	3	Angled
M00146305B1	46-305B	0.035	150	3	Angled
M00146306B1	46-306B	0.035	150	3	Straight
M00146308B1	46-308B	0.035	180	3	Angled
M00146309B1	46-309B	0.035	180	3	Straight
M00146316B1	46-316B	0.035	260	3	Angled
M00146317B1	46-317B	0.035	260	3	Straight
M00146301B1	46-301B	0.038	80	3	Angled
M00146311B1	46-311B	0.038	150	3	Angled
M00146312B1	46-312B	0.038	150	3	Straight
M00146314B1	46-314B	0.038	180	3	Angled
M00146315B1	46-315B	0.038	180	3	Straight
Long Taper Standard ZIPwire™ Hydrophilic Guidewire					
M00146325B1	46-325B	0.035	150	8	Angled
M00146331B1	46-331B	0.038	150	8	Angled
Long Taper Stiff ZIPwire™ Hydrophilic Guidewire					
M00146318B1	46-318B	0.035	150	5	Angled
M00146320B1	46-320B	0.035	150	5	Straight
M00146319B1	46-319B	0.035	260	5	Angled
M00146321B1	46-321B	0.038	150	5	Angled
M00146322B1	46-322B	0.038	150	5	Straight
Small Vessel ZIPwire™ Hydrophilic Guidewire					
M00146125B1	46-125B	0.025	150	3	Angled
M00146126B1	46-126B	0.025	150	3	Straight
M00146240B1	46-240B	0.025	180	3	Angled
M00146249B1	46-249B	0.025	180	3	Straight
M00146254B1	46-254B	0.025	260	3	Angled
M00146255B1	46-255B	0.025	260	3	Straight
J-Tip ZIPwire™ Hydrophilic Guidewire					
M00146350B1	46-350B	0.035	150	3	3mm J
M00146355B1	46-355B	0.038	150	3	3mm J
Torque Device					
M001465501	46-550	Torque Vise (.025" - .038" guide wire compatible)			



The *Super Sheath™* Introducer Sheath has a focused design for ease of entry and reduced trauma.

Wires are packaged 5 per box. Torque devices are packaged 12 per box.

European Headquarters – Paris

T: +33 1 57 66 80 00 F: +33 1 57 66 84 99

Argentina

T: +5411 4896 8556 F: +5411 4896 8550

Australia/New Zealand

T: +61 2 8336 5555 F: +61 2 9316 5528

Austria

T: +43 1 726 3005 F: +43 1 726 3005 1015

Balkans

T: +30 210 95 37 890 F: +30 210 95 79 836

Belgium (Freephone)

T: 080094 494 F: 080093 343

Brazil

T: +55 11 5502 8500 F: +55 11 5103 2212

Bulgaria

T: +359 2 986 50 48 F: +359 2 986 57 09

Canada

T: +1 888 359 9691 F: +1 888 575 7396

Chile

T: +562 445 4904 F: +562 445 4915

China – Beijing

T: +86 10 8525 1588 F: +86 10 8525 1566

China – Guangzhou

T: +86 20 8767 9791 F: +86 20 8767 9789

China – Shanghai

T: +86 21 6391 5600 F: +86 21 6391 5100

Colombia

T: +57 1 629 5045 F: +57 1 612 4761

Czech Republic

T: +420 2 3536 2911 F: +420 2 3536 4334

Denmark (Freephone)

T: 80 30 80 02 F: 80 30 80 05

Finland (Freephone)

T: 09 622 42 85 F: 09 622 42 86

France

T: +33 1 39 30 49 30 F: +33 1 39 30 49 01

Germany (Freephone)

T: 0800 072 3302 F: 0800 072 3319

Greece

T: +30 210 95 37 890 F: +30 210 95 79 836

Hong Kong

T: +852 2960 7100 F: +852 2563 5276

Hungary

T: +36 1 456 30 40 F: +36 1 456 30 41

India – Bangalore

T: +91 80 5112 1104/5 F: +91 80 5112 1106

India – Chennai

T: +91 44 2648 0318 F: +91 44 2641 4695

India – Delhi

T: +91 11 2618 0445/6 F: +91 11 2618 1024

India – Mumbai

T: +91 22 5677 8844 F: +91 22 2617 2783

Italy

T: +39 010 60 60 1 F: +39 010 60 60 200

Korea

T: +82 2 3476 2121 F: +82 2 3476 1776

Malaysia

T: +60 3 7957 4266 F: +60 3 7957 4866

Mexico

T: +52 55 5687 63 90 F: +52 55 5687 62 28

Middle East /Gulf/North Africa

T: +961 1 805 282 F: +961 1 805 445

The Netherlands

T: +31 43 356 8260 F: +31 43 356 8265

Norway (Freephone)

T: 800 104 04 F: 800 101 90

Philippines

T: +63 2 687 3239 F: +63 2 687 3047

Poland

T: +48 22 435 1414 F: +48 22 435 1410

Portugal

T: +351 1 381 25 40 F: +351 1 381 28 29

Singapore

T: +65 6418 8888 F: +65 6418 8899

South Africa

T: +27 11 840 8600 F: +27 11 463 6077

Spain

T: +34 93 444 7226 F: +34 93 405 9045

Sweden (Freephone)

T: 020 65 25 30 F: 020 55 25 35

Switzerland (Freephone)

T: 0800 826 786 F: 0800 826 787

Taiwan

T: +886 2 2747 7278 F: +886 2 2747 7270

Thailand

T: +66 2 2654 3810 F: +66 2 2654 3818

Turkey – Ankara

T: +90 312 447 98 50 F: +90 312 447 98 54

Turkey – Istanbul

T: +90 212 327 78 00 F: +90 212 327 74 27

Uruguay

T: +59 82 900 6212 F: +59 82 900 6212

UK & Eire

T: +44 1727 866633 F: +44 1727 830371

Venezuela

T: +58 212 959 8106 F: +58 212 959 5328

Boston Scientific

Delivering what's next.™

www.bostonscientific.com

www.bostonscientific.co.uk

www.bostonscientific.de

www.bostonscientific.es

www.bostonscientific.fr

www.bostonscientific.it

www.bostonscientific.nl

RCS Nanterre B420 668 420

© 2006 Boston Scientific Corporation

or its affiliates. All rights reserved.

DINPER2115EA

All cited trademarks are the property of their respective owners. Super Sheath is a trademark of Togo Medikit Co., Ltd. CAUTION: The law restricts these devices to sale by or on the order of a physician. Indications, contraindications, warnings and instructions for use can be found in the product labelling supplied with each device. Information for the use only in countries with applicable health authority product registrations.