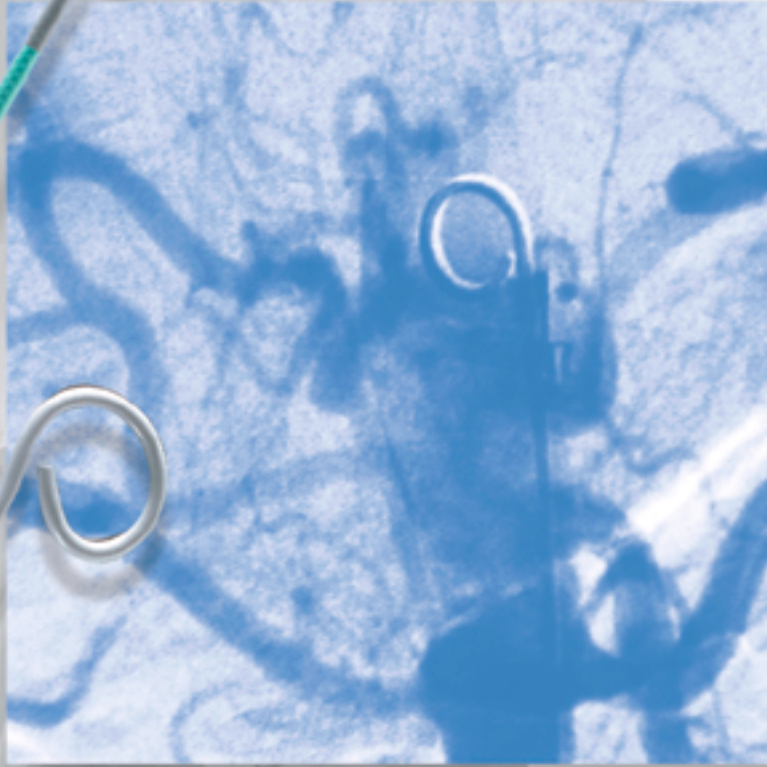


**Imager™ II**  
angiographic catheter

*In Position to Capture the Details*



Boston  
Scientific  
**MEDI-TECH™**

# Imager™ II

angiographic catheter

*Offering the combination of strength, control and radiopacity required for successful outcomes*

## In Position...

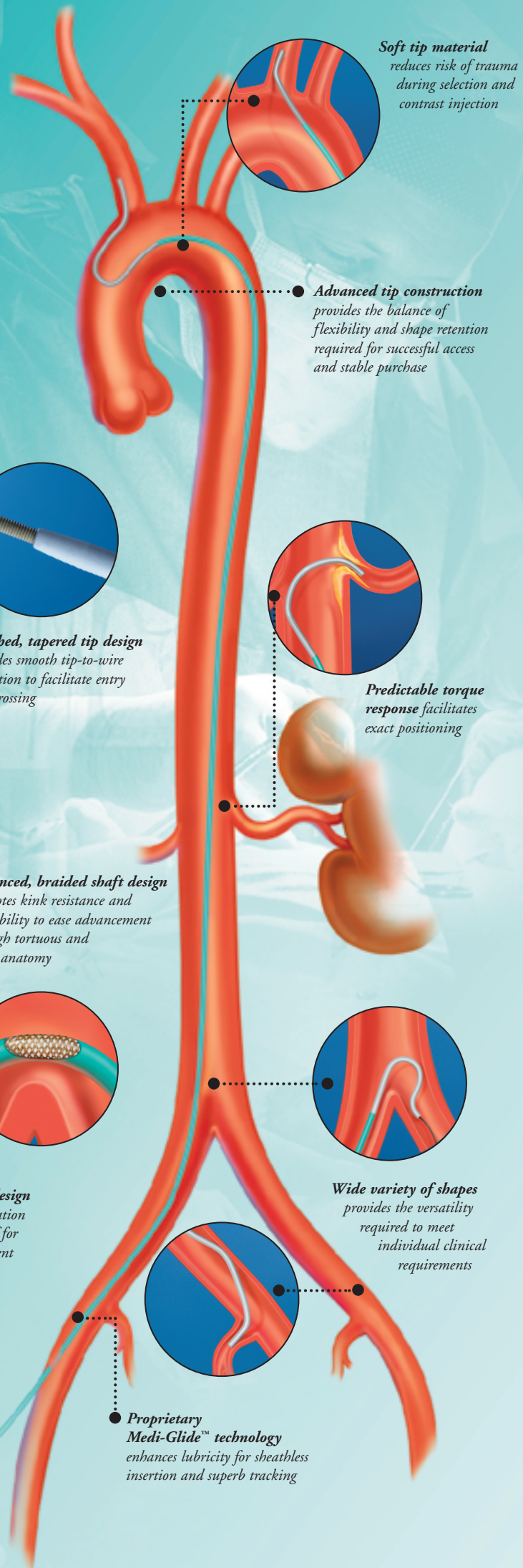


*Tungsten layering in the distal catheter segment results in a highly radiopaque catheter tip that promotes clear fluoroscopic visualization.*

## ...to Capture the Details

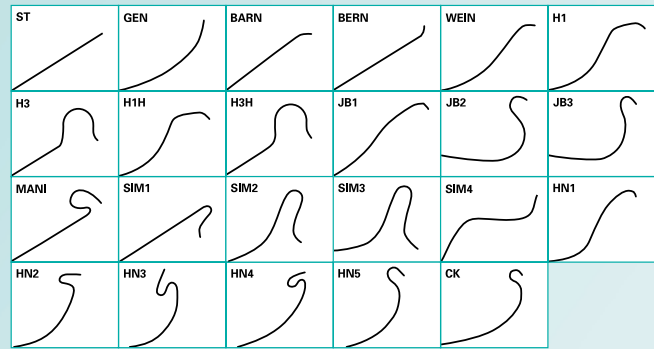


*Catheter tip stability and contrast flow result in a clear image of the vasculature.*

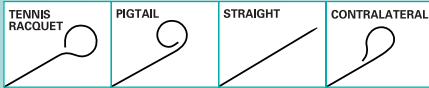


# Selective Catheters

## Cerebral



## Flush Catheters



### Tennis Racquet Catheters

Order Number	French Size	Tip Shape	Length (cm)	Compatible Guidewire (in)	Maximum Flow Rate (mL/sec)
M001315001	4	Tennis Racquet	65	.035	20
M001315011	4	Tennis Racquet	90	.035	17
M001315021	4	Tennis Racquet	100	.035	17
M001315031	5	Tennis Racquet	65	.035	32
M001315041	5	Tennis Racquet	90	.035	29
M001315051	5	Tennis Racquet	100	.035	26
M001315061	5	Tennis Racquet	65	.038	32
M001315071	5	Tennis Racquet	90	.038	29
M001315081	5	Tennis Racquet	100	.038	26

Packaged 5/Box

### Pigtail / Straight High Flow Catheters

Order Number	French Size	Tip Shape	Length (cm)	Compatible Guidewire (in)	Maximum Flow Rate (mL/sec)
M001315091	4	Pigtail	65	.035	20
M001315101	4	Straight	65	.035	20
M001315111	4	Pigtail	90	.035	17
M001315121	4	Straight	90	.035	17
M001315131	5	Pigtail	65	.038	32
M001315141	5	Pigtail	90	.038	29
M001315151	5	Pigtail	100	.038	26
M001315161	5	Straight	65	.038	32
M001315171	5	Straight	90	.038	29
M001315181	5	Straight	100	.038	26
M001315191	5	Pigtail	65	.035	32
M001315201	5	Straight	65	.035	32
M001315211	5	Pigtail	90	.035	29
M001315221	5	Straight	90	.035	29
M001315231	5	Pigtail	100	.035	26
M001315241	5	Straight	100	.035	26

Packaged 5/Box

### Contralateral High Flow Catheters

Order Number	French Size	Tip Shape	Length (cm)	Compatible Guidewire (in)	Maximum Flow Rate (mL/sec)
M001315251	4	Contralateral	65	.035	20
M001315261	4	Contralateral	90	.035	17
M001315271	4	Contralateral	100	.035	17
M001315281	5	Contralateral	65	.035	32
M001315291	5	Contralateral	90	.035	29
M001315301	5	Contralateral	100	.035	26
M001315311	5	Contralateral	65	.038	32
M001315321	5	Contralateral	90	.038	29
M001315331	5	Contralateral	100	.038	26

Packaged 5/Box

### Braided Torque Multi-Purpose Selective Catheters

Order Number	French Size	Tip Shape	Length (cm)	Compatible Guidewire (in)	Maximum Flow Rate (mL/sec)
M001314001	5	ST	65	.038	20
M001314011	5	ST	100	.038	18
M001314021	5	ST	65	.035	20
M001314031	5	ST	100	.035	18
M001314501	5	GEN	100	.035	18
M001314511	5	GEN†	100	.035	18

Packaged 5/Box

† Denotes two side holes; all others no side holes.

### Braided Torque Cerebral Selective Catheters

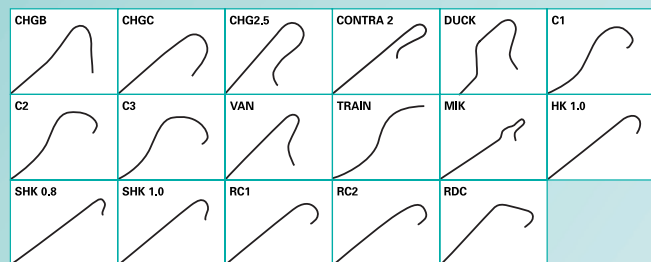
Order Number	French Size	Tip Shape	Length (cm)	Compatible Guidewire (in)	Maximum Flow Rate (mL/sec)
M001314041	5	BARN	100	.038	18
M001314051	5	BERN	100	.038	18
M001314061	5	BERN	100	.035	18
M001314071	5	BERN	40	.035	20
M001314081	5	BERN	40	.038	20
M001314091	5	BERN	65	.035	20
M001314101	5	BERN	65	.038	20
M001314111	5	WEIN	100	.038	12
M001314121	5	WEIN	100	.035	12
M001314131	5	H1	65	.038	20
M001314141	5	H1	100	.038	12
M001314151	5	H1	100	.035	12
M001314161	5	H3	100	.038	12
M001314171	5	H3	100	.035	12
M001314181	5	H1H	100	.038	12
M001314191	5	H1H	100	.035	12
M001314201	5	H3H	100	.035	12
M001314211	5	JB1	65	.038	20
M001314221	5	JB1	100	.038	12
M001314231	5	JB1	100	.035	12
M001314241	5	JB2	100	.038	12
M001314251	5	JB2	100	.035	12
M001314261	5	JB3	100	.038	12
M001314271	5	JB3	100	.035	12
M001314281	5	MANI	100	.038	10
M001314291	5	MANI	100	.035	10
M001314301	5	SIM1	65	.038	20
M001314311	5	SIM1	65	.035	20
M001314321	5	SIM1	100	.038	20
M001314331	5	SIM1	100	.035	20
M001314341	5	SIM2	100	.038	20
M001314351	5	SIM2	100	.035	20
M001314361	5	SIM3	100	.038	20
M001314371	5	SIM3	100	.035	20
M001314381	5	SIM4	100	.038	20
M001314391	5	HN1	100	.038	10
M001314401	5	HN1	100	.035	10
M001314411	5	HN2	100	.038	10
M001314421	5	HN2	100	.035	10
M001314431	5	HN3	100	.038	10
M001314441	5	HN3	100	.035	10
M001314451	5	HN4	100	.038	10
M001314461	5	HN4	100	.035	10
M001314471	5	HN5	100	.038	10
M001314481	5	HN5	100	.035	10
M001314491	5	CK	100	.035	10

Packaged 5/Box

Every day, in every case, combining with a system of high performance accessories.

## Selective Catheters

### Visceral



### Braided Torque Visceral Selective Catheters

Order Number	French Size	Tip Shape	Length (cm)	Compatible Guidewire (in)	Maximum Flow Rate (mL/sec)
M001314521	5	CHGB	65	.038	10
M001314531	5	CHGB	65	.035	10
M001314541	5	CHGC	65	.038	10
M001314551	5	CHGC	65	.035	10
M001314561	5	CHG2.5	65	.038	10
M001314571	5	CHG2.5	65	.035	10
M001314581	5	CONTRA 2	65	.038	10
M001314591	5	CONTRA 2	65	.035	10
M001314601	5	DUCK	65	.038	10
M001314611	5	DUCK	65	.035	10
M001314621	5	C1	65	.038	20
M001314631	5	C1	65	.035	20
M001314641	5	C1†	65	.038	20
M001314651	5	C1†	65	.035	20
M001314661	5	C2	65	.038	20
M001314671	5	C2	65	.035	20
M001314681	5	C2†	65	.038	20
M001314691	5	C2†	65	.035	20
M001314701	5	C3	65	.038	20
M001314711	5	C3	65	.035	20
M001314721	5	C3†	65	.038	20
M001314731	5	C3†	65	.035	20
M001314741	5	VAN†	65	.038	10
M001314751	5	TRAIN	65	.038	20
M001314761	5	MIK	65	.038	10
M001314771	5	MIK	65	.035	10
M001314781	5	HK1.0	65	.038	10
M001314791	5	HK1.0	65	.035	10
M001314801	5	SHK0.8	65	.038	10
M001314811	5	SHK0.8	65	.035	10
M001314821	5	SHK1.0	65	.038	10
M001314831	5	SHK1.0	65	.035	10
M001314841	5	RC1	65	.038	10
M001314851	5	RC1	65	.035	10
M001314861	5	RC2	65	.038	10
M001314871	5	RC2	65	.035	10
M001314881	5	RDC	65	.038	20
M001314891	5	RDC	65	.035	20
M001314901	5	RDC†	65	.038	20
M001314911	5	RDC†	65	.035	20

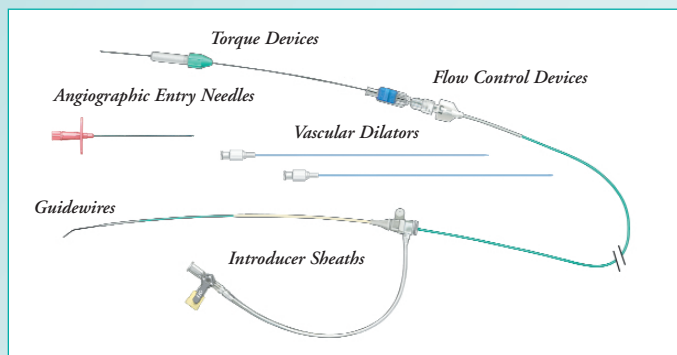
Packaged 5/Box

† Denotes two side holes; all others no side holes

Single use only.

FloSwitch is a registered trademark of Viggo, AB. Medikit is a trade name and Supersheath is a trademark of Medikit Co. Ltd. Japan, Boston Scientific Corporation or its affiliates claim trademark rights in Imager II and Medi-Glide.

Radiographs courtesy of Robyn Pugash, M.D., St. Michael's Hospital, Toronto, Canada and Dr. Thomas Jabnke, Universitätsklinik Kiel, Germany.



### Angiographic Entry Needles

Order Number	Description
M001441631	SEN-18/038
M001441691	EN-18/038
M001441721	PEN-18/038
M001441741	MPEN-18/038
M001441601	SEN-19/035
M001441661	EN-19/035

Packaged 10/Box

### Dilators

Order Number	Description
M001481491	TD-4/35
M001481511	TD-5/35
M001481551	TD-5/38
M001481521	TD-6/38
M001481531	TD-7/38
M001481541	TD-8/38
M001482501	TD-10/38
M001482511	TD-12/38
M001482521	TD-14/38

Packaged 10/Box

### Multi-Torque Vise

Order Number	Description
M001465501	Torque vises fit 0.025" to 0.038" wires

Packaged 12/Box

### FloSwitch® HP

Order Number	Description
M001442001	FloSwitch® (12box)
M001442011	FloSwitch® (24box)

### Medikit Supersheath™ Introducers

Order Number	11 cm length	25 cm length	French Size
<b>Introducer (without needle and 0.035" guidewire)</b>			
M001443561	M001443571		4
	M001443601	M001443611	5
	M001443621	M001443631	6
	M001443641	M001443651	7
	M001443661	M001443671	8
	M001443681	M001443691	9
<b>Kits (complete with needle and 0.035" guidewire)</b>			
M001443711	M001443721	M001443731	4
M001443741	M001443751	M001443761	5
	M001443771	M001443781	6
	M001443791	M001443801	7
	M001443811	M001443821	8
	M001443831	M001443841	9

Packaged 10/box

Kits supplied with 19 Ga needle and .035" J-tip guidewire

(45cm length with 7cm and 11cm introducers; 80cm length with 25cm introducers)

**Boston Scientific**  
**MEDI-TECH™**

Freephone from Sweden:  
Tel: 020 65 25 30 Fax: 020 55 25 35

Freephone from Finland:  
Tel: 09 622 42 85 Fax: 09 622 42 86

Freephone from Denmark:  
Tel: 80 30 80 02 Fax: 80 30 80 05

Freephone from Norway:  
Tel: 80 010 404 Fax: 80 010 190

Freephone from Belgium:  
Tel: 080094 494 Fax: 080093 343

Freephone from Germany:  
Tel: 0800 072 3302 Fax: 0800 072 3319

European Headquarters (Paris)  
Tel: +33 1 46 49 66 00 Fax: +33 1 46 49 66 99

France  
Tel: +33 1 39 30 49 30 Fax: +33 1 39 30 49 01

Italy  
Tel: +39 010 60 60 236 Fax: +39 010 60 60 200

Switzerland  
Tel: +41 32 626 57 00 Fax: +41 32 626 57 01

Spain  
Tel: +34 93 444 7226 Fax: +34 93 405 9045

Poland  
Tel: +48 22 866 40 40 Fax: +48 22 866 40 41

Czech Republic  
Tel: +420 2 3536 2911 Fax: +420 2 3536 4334

Hungary  
Tel: +36 1 456 30 40 Fax: +36 1 456 30 41

Austria  
Tel: +43 1 726 3005 1021 Fax: +43 1 726 3005 10 15

UK  
Tel: +44 1727 866633 Fax: +44 1727 830371

The Netherlands  
Tel: +31 43 356 8260 Fax: +31 43 356 8265

Portugal  
Tel: +351 1 381 25 40 Fax: +351 1 381 28 29