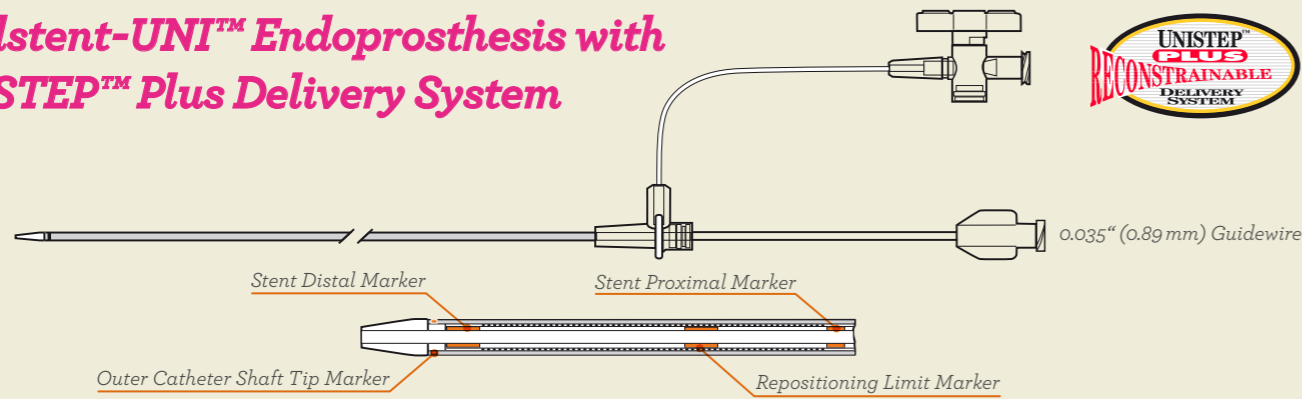


# Wallstent-UNI™ Endoprosthesis with UNISTEP™ Plus Delivery System



Boston Scientific

# Wallstent-Uni™ Endoprosthesis With UNISTEP™ Plus Delivery System

Order Number		Fully Open		Wallstent-Uni™ implanted in vessel						Delivery System	
Short Instrument	Long Instrument	Stent Diam. (mm)	Stent Length (mm)	Vessel Diam. (mm)	Stent Length (mm)	Vessel Diam. (mm)	Stent Length (mm)	Vessel Diam. (mm)	Stent Length (mm)	Cath. Size (F)/(mm)	Recom. Intro. Sheath (F)/(mm)
M001731000	M001731010	5	20	4	26	3	30	2	33	6 (≤ 2.1)	6 / 2.00
M001731020	M001731030	5	40		54		63		68		
M001731040	M001731050	5	55		78		89		97		
M001731060	M001731070	5	80		116		134		145		
M001731080	M001731090	6	20	5	25	4	29	3	32	6 (≤ 2.1)	6 / 2.00
M001731100	M001731110	6	45		52		60		65		
M001731120	M001731130	6	60		74		85		93		
M001731140	M001731150	6	90		111		128		139		
M001731160	M001731170	7	20	6	25	5	28	4	30	6 (≤ 2.1)	6 / 2.00
M001731180	M001731190	7	40		50		57		63		
M001731200	M001731210	7	60		72		82		90		
M001731220	M001731230	7	90		108		123		134		
M001731240	M001731250	8	20	7	29	6	36	5	41	6 (≤ 2.1)	6 / 2.00
M001731260	M001731270	8	40		49		56		61		
M001731280	M001731290	8	60		70		79		86		
M001731300	M001731310	8	80		105		119		130		
M001731320	M001731330	10	20	9	27	8	33	7	38	6 (≤ 2.1)	6 / 2.00
M001731340	M001731350	10	42		48		54		58	7 (≤ 2.4)	7 / 2.33
M001731360	M001731370	10	68		69		77		83		
M001731380	M001731390	10	94		103		115		124		
M001731400	M001731410	12	20	11	26	10	31	9	36	8 (≤ 2.9)	9 / 3.00
M001731420	M001731430	12	40		47		51		55		
M001731440	M001731450	12	60		66		73		79		
M001731460	M001731470	12	90		100		110		119		
M001731480	—	14	20	13	27	12	33	11	38	9 (≤ 3.2)	10 / 3.33
M001731490	—	14	40		46		50		54		
M001731500	—	14	60		65		72		77		
M001731510	—	14	90		98		107		115		
M001731520	—	16	20	15	23	14	28	13	32	9 (≤ 3.2)	10 / 3.33
M001731530	—	16	40		45		49		52		
M001731540	—	16	60		64		70		75		
M001731550	—	16	90		97		105		112		
M001731560	—	18	40	17	45	16	48	15	51	10 (≤ 3.5)	11 / 3.66
M001731570	—	18	60		64		69		73		
M001731580	—	18	90		95		103		110		
M001731590	—	20	40		19		40		18		
M001731600	—	20	55	57		63	68				
M001731610	—	20	80	86		94	102				
M001731620	—	22	35	21		35	20	40		19	44
M001731630	—	22	45		50	57		62			
M001731640	—	22	70		75	85		93			
M001731650	—	24	35		23	35		22	39		21
M001731660	—	24	45	50		56	61				
M001731670	—	24	70	75		84	92				

Short instrument: Usable instrument length 75 cm; Total instrument length 100 cm; Recommended guidewire 0.035" (0.89 mm) / 180 cm  
 Long instrument: Usable instrument length 135 cm; Total instrument length 160 cm; Recommended guidewire 0.035" (0.89 mm) / 300 cm

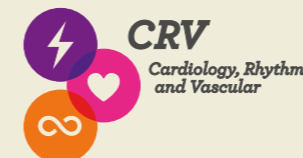


**All round performance**

Boston Scientific

Defining tomorrow, today.™

www.bostonscientific-international.com



© 2012 Boston Scientific Corporation or its affiliates. All rights reserved. DINPER2042EF

All cited trademarks are the property of their respective owners. CAUTION: The law restricts these devices to sale by or on the order of a physician. Indications, contraindications, warnings and instructions for use can be found in the product labelling supplied with each device. Information for the use only in countries with applicable health authority product registrations. PI-116301-AA Oct 2012 Printed in Germany by medicalvision.

# The Wallstent-Uni™

## Multi-Purpose Stent with Unistep™ Plus Delivery System

### Meeting Clinical Needs

- The Wallstent-Uni™ is the result of over 10 years of innovation and improvement
- Proven in arterial, venous and non-vascular indications

### Wallstent-Uni™-versal

Wallstent-Uni™ is designed to meet the needs of the widest range of indications and anatomies.

- 68 different sizes
- 20mm to 145mm in length
- 5mm to 24mm in diameter

### Indications Include†

**Arterial:** Iliac to SFA

**Venous:** TIPS, SVC and Sub-Clavian

**Non Vascular:** Biliary and Tracheobronchial

† Consult directions for use.

### High Compression Strength\*

- Braided construction and Elgiloy® Material designed to provide excellent compression resistance.

### 3 Times Better Radiopacity\*

- The Wallstent-Uni™ stent is clearly visible under fluoroscopy for its entire length\*

### Optimal Vessel Support

- Wallstent-Uni™ has very small cells yet the same metal to artery ratio as most leading stents
- This gives excellent vessel support without extra risk of vessel reaction

## User Confidence All Round Performance

### Excellent Trackability

- Wallstent-Uni™ is one of the most trackable stent systems available today\*
- Particularly suited to contra-lateral approach

## UniStep™ Plus Delivery System

- Reconstrainable
- Accurate Placement

### 3 Steps to Accurate Delivery

- 1** Accurate Distal Placement Deploy 1 to 2 cm slightly beyond the target and gently pull back the system to desired position.



- 2** Continue release until the outer catheter lines up with the repositioning limit marker.

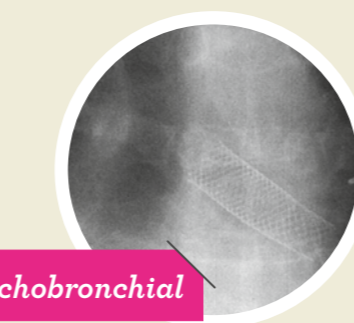
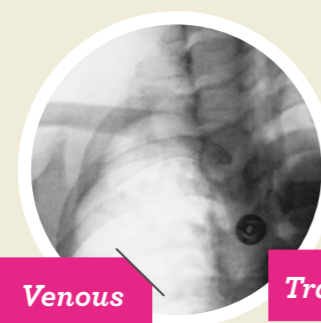
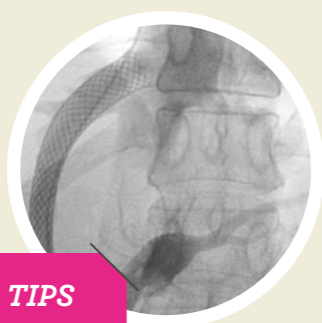
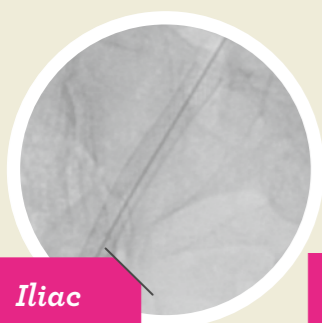


- 3** Accurate Proximal Placement The proximal end will land between the two proximal markers.



## The Same High Performance Delivery System for a Full Range of Stents

- Wallstent-Uni™ for a wide range of clinical options
- Wallstent™ RP for tight or tortuous lesions
- Wallgraft™ for trauma, aneurysms or complex occlusive disease



\* Data derived from bench testing performed by BSC. Test results on file at BSC. Test results may not be indicative of clinical performance.